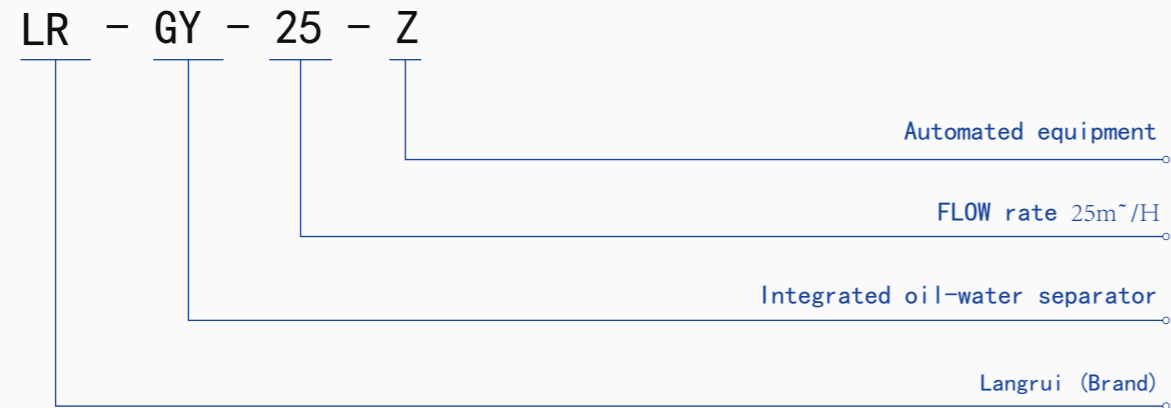


# Integrated Oil Separation & Lifting Equipment

Exquisitely Manufactured · Pragmatic & Innovative



## Model Explanation



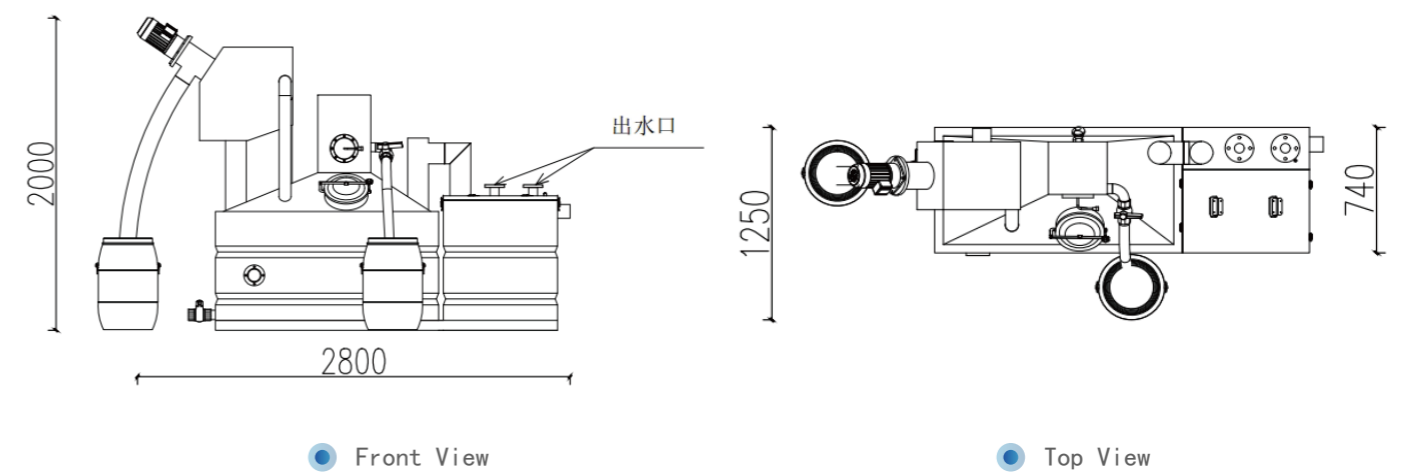
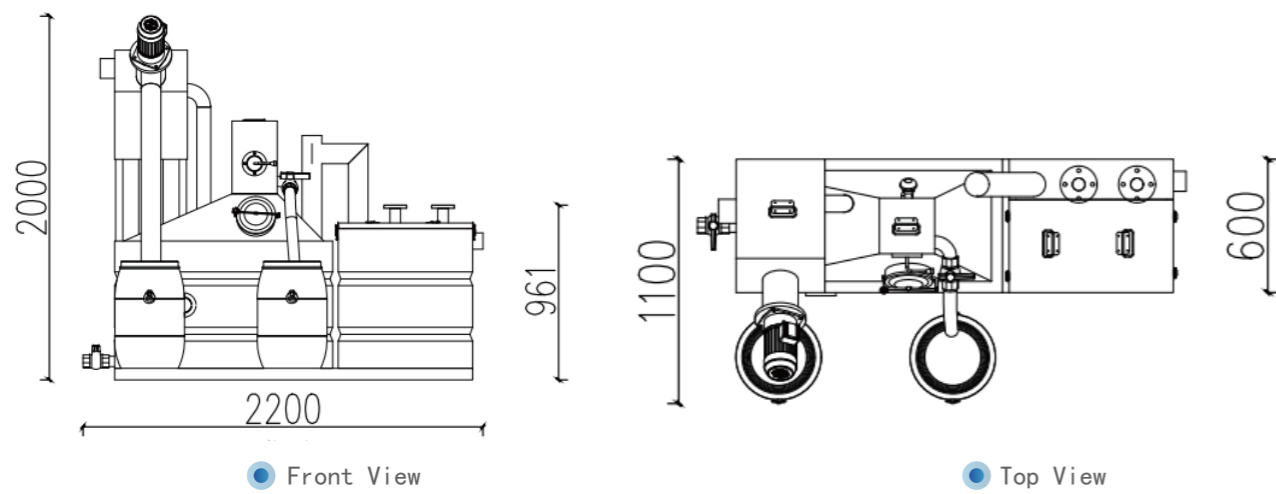
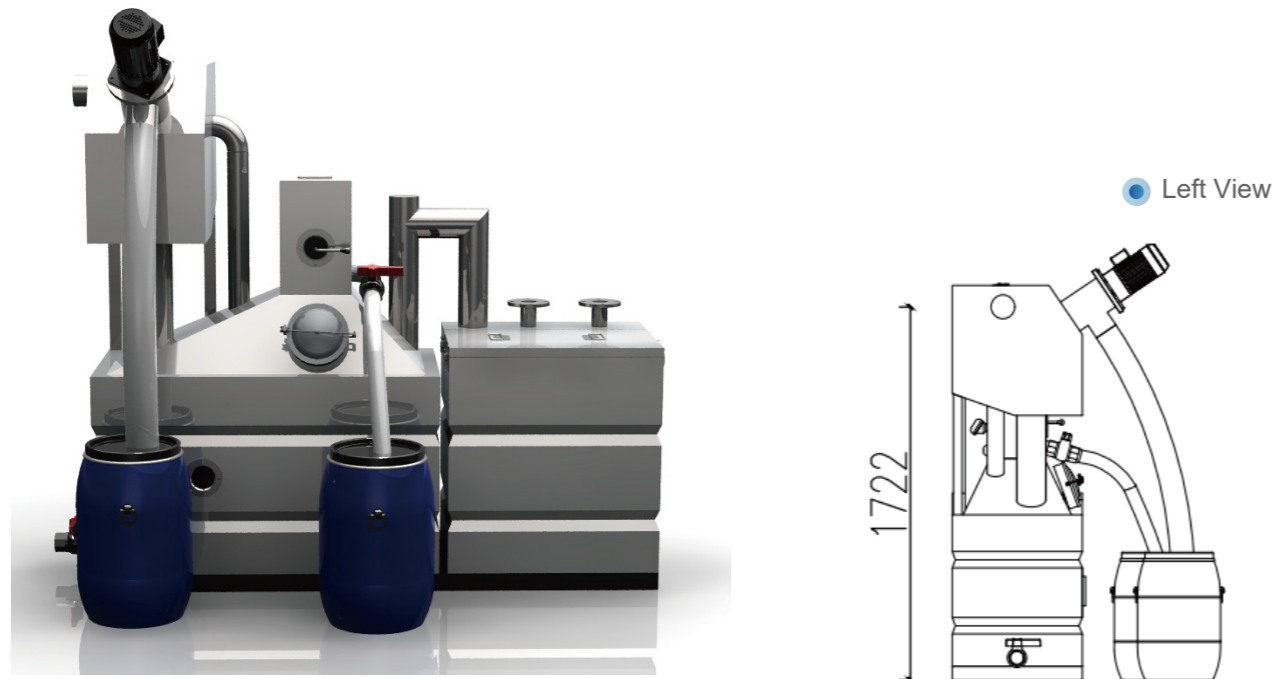
## Operating Conditions

- Provide installation space, load capacity, and transportation access for the oil separator.
- Reserve daily maintenance space: minimum 800mm clearance around all sides of the equipment.
- Reserve drainage and ventilation pipes for the separator.
- Prepare 380V power supply with 6mm - 25mm cables.
- Install valves on both inlet and outlet pipes.
- A sump well is recommended in the equipment room.
- Underground installation is strictly prohibited

## Application Scenarios

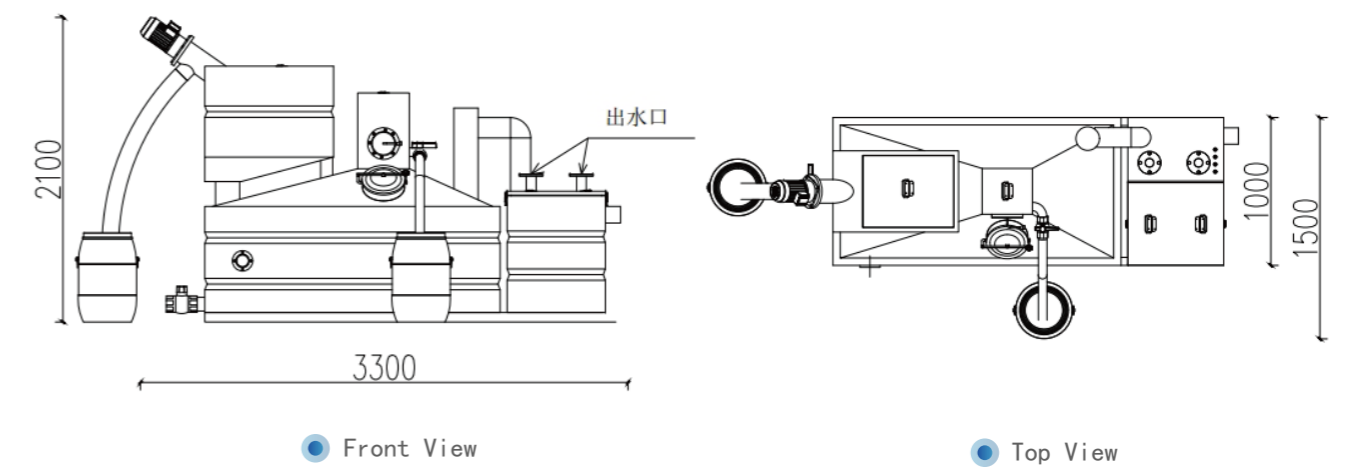
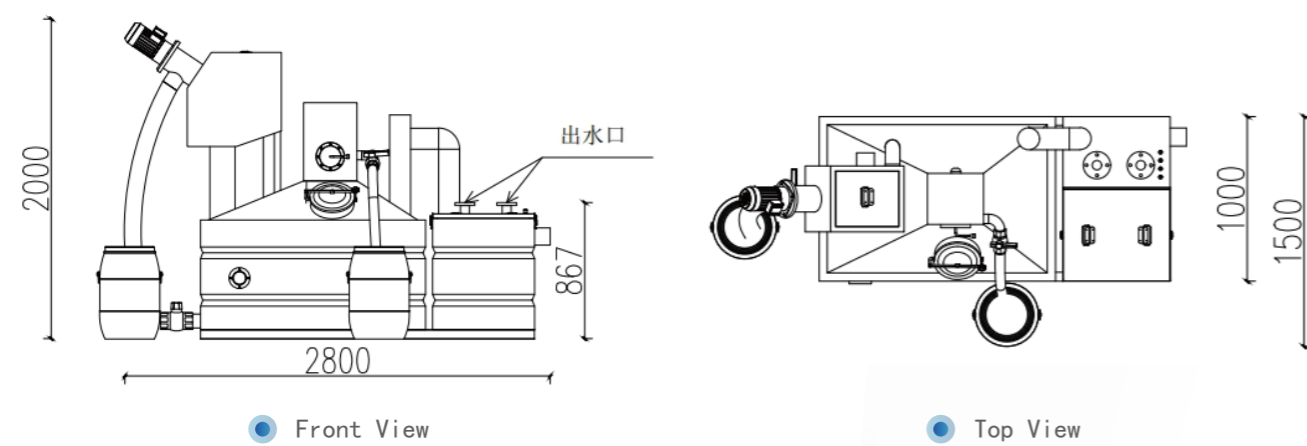
Hotels, public canteens, catering shops, food courts, supermarket restaurants, residential kitchens, and institutional canteens.





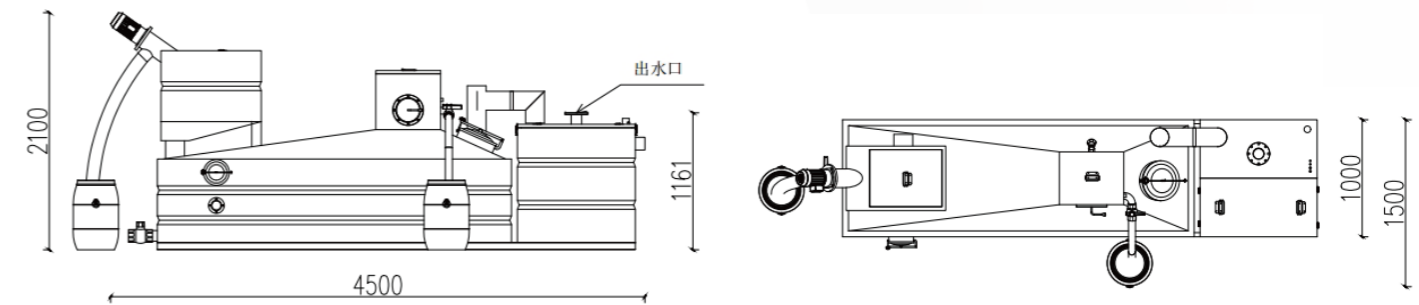
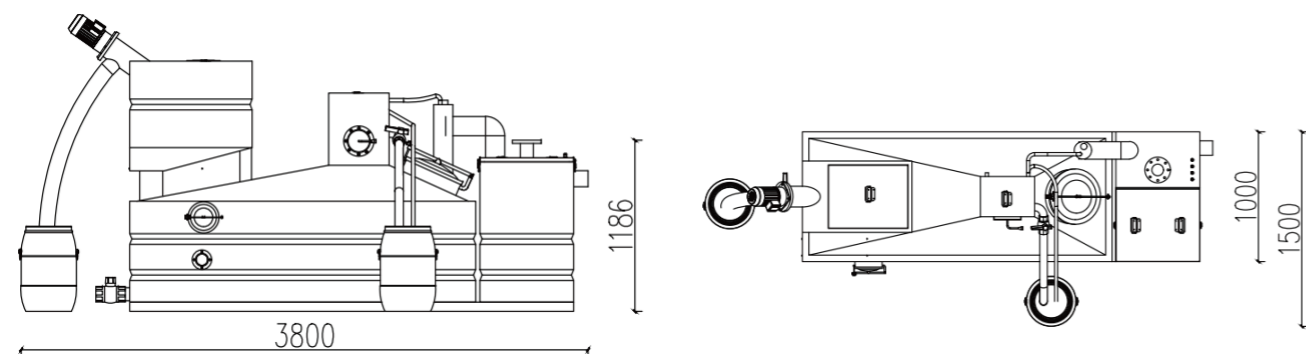
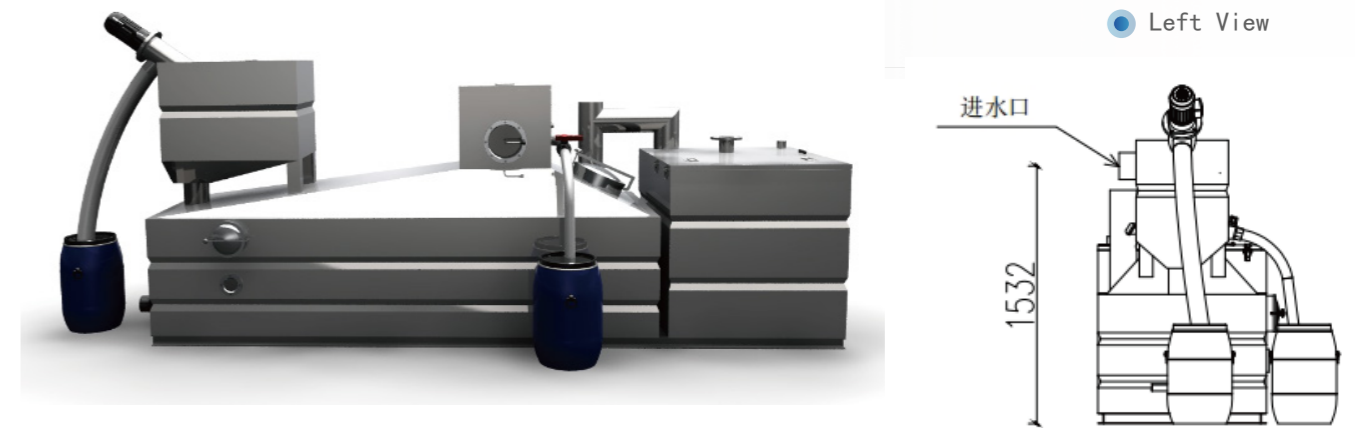
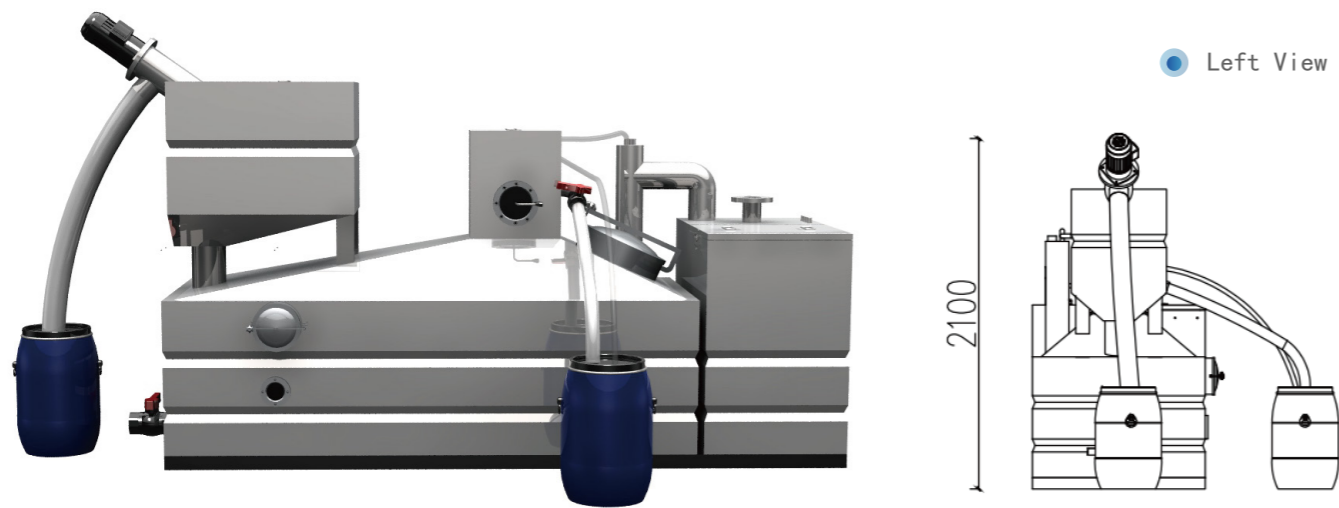
Model	RatedCapacity	MaxCapacity	Overall Dimensions (mm)			Head	Inlet Size	Outlet Size
			L	W	H			
LRGY-10-Z	10	15	2200	1100	2000	5-25	DN100	DN50

Model	RatedCapacity	MaxCapacity	Overall Dimensions (mm)			Head	Inlet Size	Outlet Size
			L	W	H			
LRGY-15-Z	15	20	2800	1250	2000	5-25	DN100	DN50



Model	RatedCapacity	MaxCapacity	Overall Dimensions (mm)			Head	Inlet Size	Outlet Size
			L	W	H			
LRGY-25-Z	25	35	2800	1500	2000	5-25	DN100	DN50

Model	RatedCapacity	MaxCapacity	Overall Dimensions (mm)			Head	Inlet Size	Outlet Size
			L	W	H			
LRGY-40-Z	40	50	3300	1500	2100	5-25	DN150	DN65



● Front View

● Top View

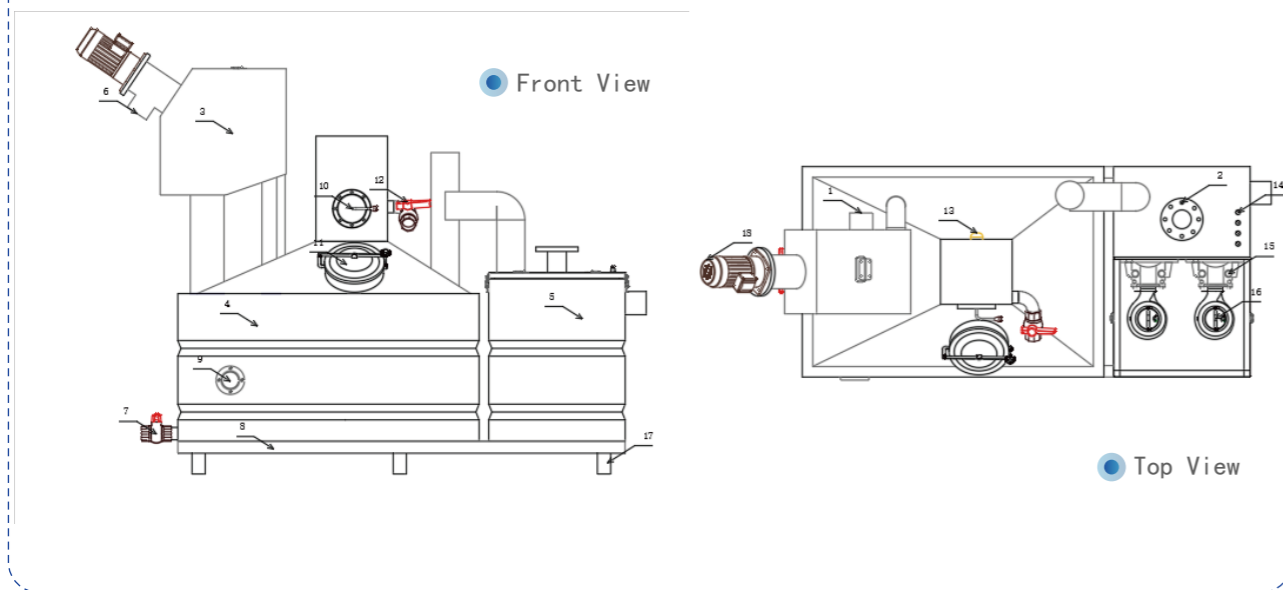
● Front View

● Top View

Model	RatedCapacity	MaxCapacity	Overall Dimensions (mm)			Head	Inlet Size	Outlet Size
			L	W	H			
LRGY-50-Z	50	60	3800	1500	2100	5-25	DN150	DN65

Model	RatedCapacity	MaxCapacity	Overall Dimensions (mm)			Head	Inlet Size	Outlet Size
			L	W	H			
LRGY-72-Z	72	82	4500	1500	2100	5-25	DN150	DN80

### 设备配置图



### 设备配置图

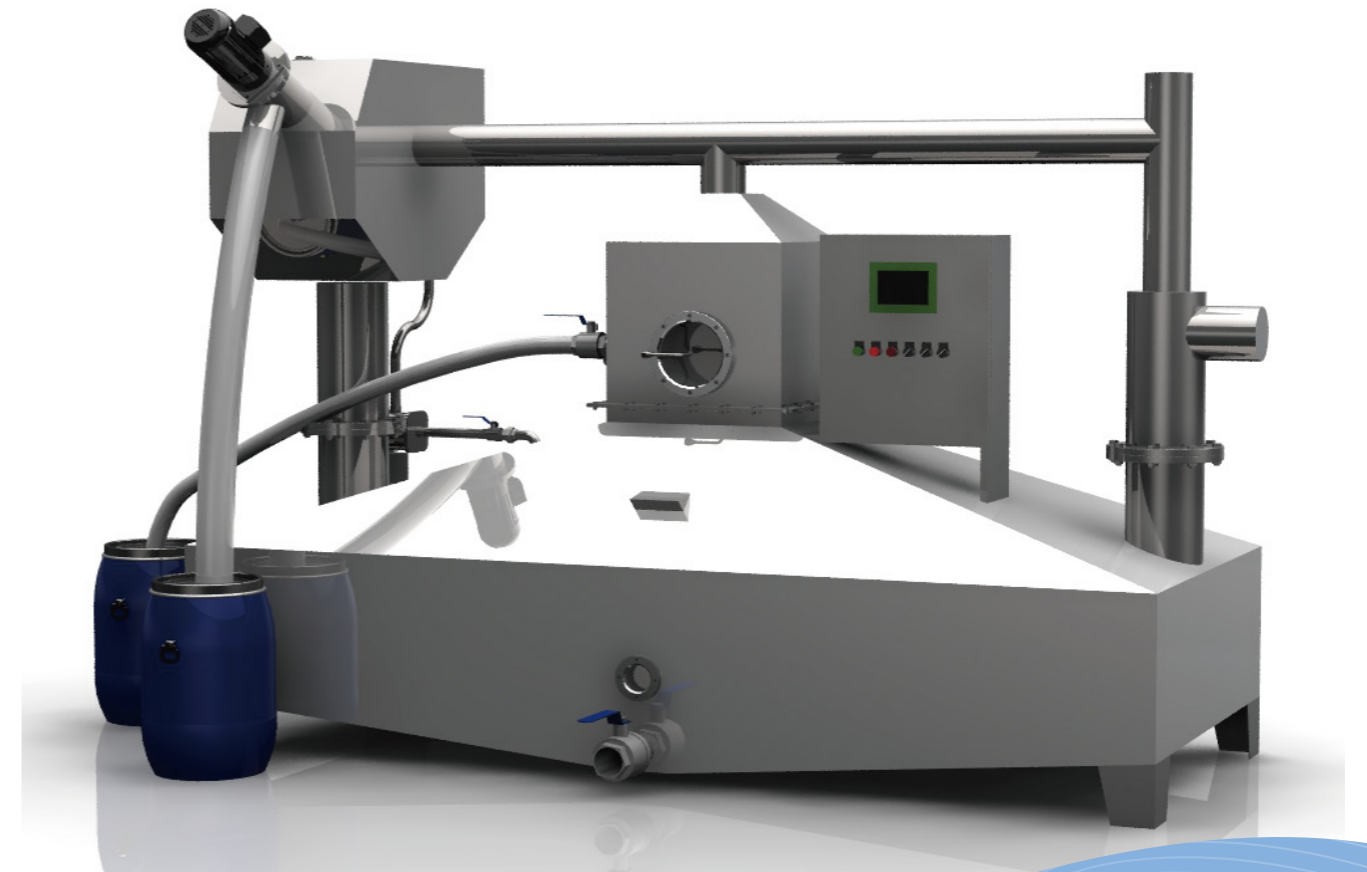
No.	Part Name	No.	Part Name
1	Water Inlet	10	Sight Glass
2	Water Outlet	11	Access Hatch
3	Solid-Liquid Separation Chamber	12	Oil Drain Port
4	Oil-Water Separation Chamber	13	Thermostat
5	Lifting Chamber	14	Cable Gland
6	Residue Discharge Port	15	Coupling Assembly
7	Sludge Discharge Port	16	Water Pump
8	Channel Steel Base	17	Base
9	Sight Glass	18	Motor

### Component

Component	标准配置	可选配置
Tank Body	Material: SUS304, 1.5mm	Material: SUS316, 2.0mm / 2.5mm
Residue Removal System	Automatic spiral residue removal	Chain-plate residue removal, backwash self-cleaning
Oil Separation System	Manual oil discharge	Automatic oil discharge / automatic oil skimming
Lifting System	Self-developed professional sewage pump	Pump brand customizable by customer
Control System	Standard control configuration	PLC / communication interface / SMS alert function, touchscreen, customizable component brands
Automatic Thermostatic System	Automatic temperature-controlled heating	
Level Control System	Float level controller	Submersible stainless steel level sensor, pressure sensor, air pressure sensor

# Commercial Oil-Water Separator

Precision Crafted · Practical Innovation



Product Configuration

01  
Fully Automatic Maintenance-Free  
Solid-Liquid Separation Tank  
0 Automatic Maintenance-Free  
Solid-Liquid Separation Tank

02  
Screw Removal  
Device

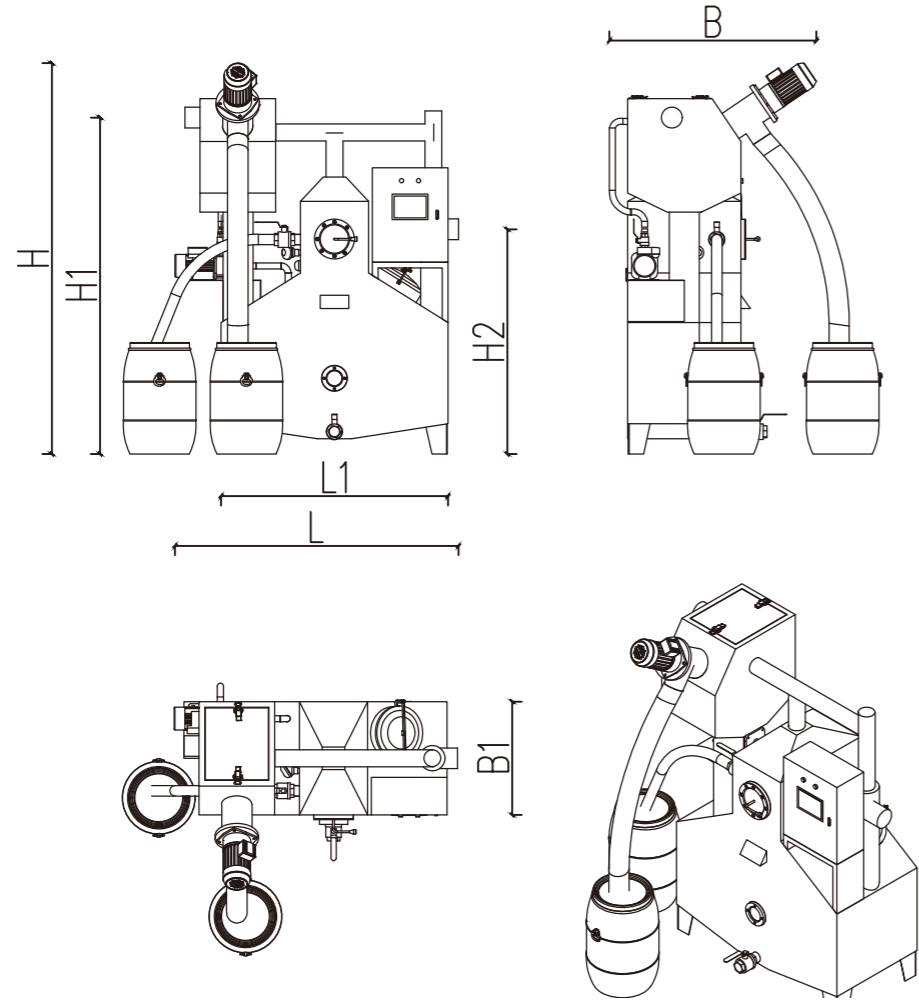
03  
Backwash  
Device

04  
Electric Heating  
Device

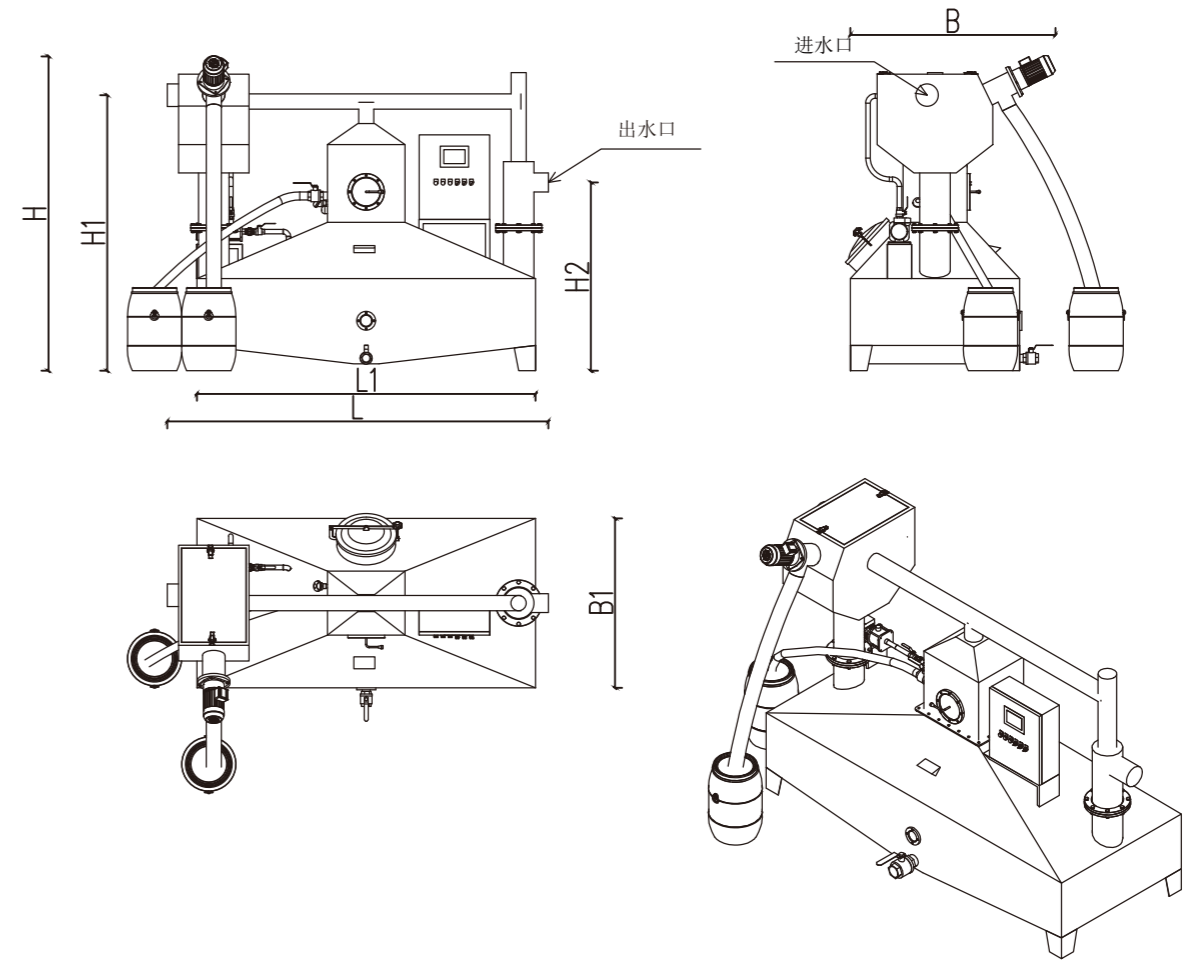
05  
Observation Window  
with Scraper Device

06  
Flow Sensor  
Monitoring Function

07  
PLC Control



Overall Dimension Drawing



外观尺寸图

Parameter Table

NO.	Part No.	Model	Treatm	Inlet	Outlet	Outlet Pipe Dia. (mm)						Weight	
						L	L1	B	B1	H	H1		H2
1	110201	GY-15-Z	5-15	DN100	DN150	1700	1200	1094	600	2068	1780	1189	305
2	110202	GY-25-Z	20-30	DN100	DN150	2130	2000	1066	735	2000	1715	1120	375
3	110203	GY-36-Z	30-40	DN100	DN150	2130	2000	1331	1000	2000	1715	1120	450

参数表

No.	Part No.	Model	Treatment	Inlet	Outlet	Outlet Pipe Dia. (mm)						Weight	
						L	L1	B	B1	H	H1		H2
4	110204	GY-40-Z	36-45	DN150	DN200	2700	2400	1453	1200	2228	1953	1355	675
5	110205	GY-55-Z	50-60	DN150	DN200	3200	2960	1453	1200	2300	2023	1346	705
6	110206	GY-72-Z	70-80	DN150	DN200	3210	2960	1590	1350	2300	2000	1450	730



## 各功能部件说明

序号	名称	功能
1	Solid-Liquid Separation Chamber	Separates solid residues via fine screen, screw deslagger, flow sensor & backwash device.
1.1	Fine Screen	5mm gap; intercepted residues conveyed to collection bucket.
1.2	Screw Deslagger	Dewateres & conveys residues via reducer, screw shaft & outlet.
1.3	Backwash Device (Optional)	Uses treated water to flush chamber, prevent screen clogging.
2	Oil-Water Separation Chamber	Separates grease via baffles, heater, drain valve & flow sensor.
2.2	Baffle Plate	Directs grease to wastewater surface.
2.2	Electric Heater	Maintains grease fluidity via heating rods & temp sensors.
2.3	Flow Sensor	Controls deslagger start/stop, reduces wear & energy use (std on some models).
2.4	Drain Valve	Periodically discharges sludge from chamber bottom.
3	Oil Tank Observation Window	Scraper-equipped window for grease thickness & operation monitoring.
4	Control System	PLC touchscreen for intelligent auto-control (relay version for land type).
5	Grease/Residue Bucket	Fully sealed, odor-tight.
6	Vent Pipe	Maintains pressure balance, prevents odor escape.
7	Oversized Manhole	
8	Bypass Pipe	Prevents deslagger overflow at high flow.

